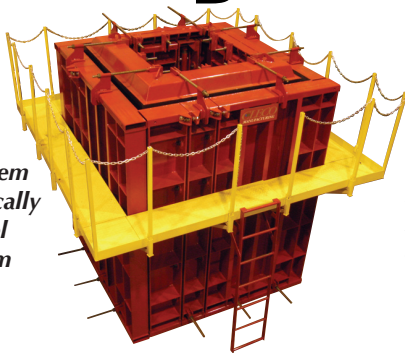


Versatility can

boost profits!

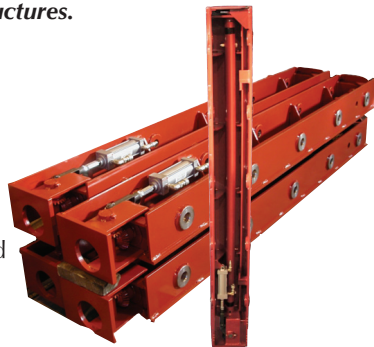
Cleco's FormAll™ Wet Cast Box Forming System featuring the hydraulically operated straight panel CamWall™ Core System



This system literally allows for any engineered configuration in the production of single, twin and quad cell box structures; 3-sided structures; 5-sided structures; and custom and utility structures.

- **Precision Built...** for superior product quality
- **Low Maintenance...** for high volume production
- **Versatile...** to expand your product capabilities
- **Easy to Use...** for reduced labor costs
- **Durable...** for a lifetime of service

The **Cleco CamWall Series Core System** sets up quickly and is easy to use. It requires minimal maintenance and is designed for real world conditions. Its unique design allows for unprecedented versatility unmatched by any other system on the market.



CLECO
MANUFACTURING

14 Park Avenue, Hudson, New Hampshire 03051
(603) 886- 5472 fx (603) 880-3095
www.clecoforms.com


NPCA
MEMBER


American
Concrete Pipe
Association